



**India Meteorological Department
(Ministry of Earth Sciences)
SPECIAL MESSAGE NO. 1 (BoB/02/2025)**

TIME OF ISSUE: 1230 HOURS IST

DATED: 14.07.2025

FROM: INDIA METEOROLOGICAL DEPARTMENT

(FAX NO. 24643965/24699216/24623220)

TO: CONTROL ROOM, NDM, MINISTRY OF HOME AFFAIRS (FAX.NO. 23093750)

CONTROL ROOM NDMA (FAX.NO. 26701729)

CABINET SECRETARIAT (FAX.NO.23012284, 23018638)

PS TO HON'BLE MINISTER FOR S & T AND EARTH SCIENCES (FAX NO.23316745)

SECRETARY, MOES (FAX NO. 24629777)

H.Q. (INTEGRATED DEFENCE STAFF AND CDS) (FAX NO. 23005137/23005147)

DIRECTOR GENERAL, DOORDARSHAN (23385843)

DIRECTOR GENERAL, AIR (23421105, 23421219)

PIB MOES (FAX NO. 23389042)

UNI (FAX NO. 23355841)

D.G. NATIONAL DISASTER RESPONSE FORCE (NDRF) (FAX NO. 26105912, 2436 3260)

DIRECTOR, PUNCTUALITY, INDIAN RAILWAYS (FAX NO. 23388503)

CHIEF SECRETARY, ODISHA (FAX NO. 0674-2536660)

CHIEF SECRETARY, WEST BENGAL (FAX NO. 033-22144328)

CHIEF SECRETARY, GOVT. OF SIKKIM (FAX NO.0359-2222851)

CHIEF SECRETARY, GOVT. OF BIHAR (FAX NO. 0612-2217085)

CHIEF SECRETARY, GOVT. OF JHARKHAND (FAX NO. 0651-2400255)

CHIEF SECRETARY, GOVT. OF CHHATTISGARH (FAX NO. 0771-2221206)

CHIEF SECRETARY, GOVT. OF MADHYA PRADESH (FAX NO. 0755-2551521)

CHIEF SECRETARY, GOVT. OF RAJASTHAN (FAX NO. 0141-2227114)

Subject: (A) Well marked low pressure area over southeast Gangetic West Bengal and adjoining Bangladesh

(B)) Well Marked Low pressure area over northeast Rajasthan & adjoining northwest Madhya Pradesh

(A) Well marked low pressure area over southeast Gangetic West Bengal and adjoining Bangladesh

Yesterday's low pressure area over north Bay of Bengal & adjoining coastal areas of Bangladesh, West Bengal and north Odisha moved north-northwestwards and lay as a well marked low pressure area over southwest Bangladesh and adjoining Gangetic West Bengal at 0530 hrs IST. Moving slowly west-northwestwards, and lay over southeast Gangetic West Bengal and adjoining Bangladesh at 0830 hrs IST of today, the 14th July, 2025.

It is likely to move northwestwards and concentrate into a Depression over Gangetic West Bengal during next 24 hours.

(B) Well Marked Low pressure area over northeast Rajasthan & adjoining northwest Madhya Pradesh

Yesterday's low pressure area over northwest Madhya Pradesh & neighbourhood moved slowly west-northwestwards and lay over northwest Madhya Pradesh and adjoining east Rajasthan 0530 hrs IST. It lay as a well marked Low Pressure area over northeast Rajasthan & adjoining northwest Madhya Pradesh at 0830 hrs IST of today, the 14th July, 2025.

It is likely to continue to move further slowly west-northwestwards across Rajasthan during next 2 days.

Warnings:

(i) Rainfall Warning:

Odisha: Light to moderate rainfall at most places with heavy to very heavy rainfall at a few places with extremely heavy rainfall (≥ 21 cm) at isolated places on 14th July; heavy to very heavy rainfall at isolated places on 16th July and heavy rainfall at isolated places on 17th July.

West Bengal & Sikkim: Light to moderate rainfall at most places with heavy to very heavy rainfall at a few places with extremely heavy rainfall (≥ 21 cm) at isolated places over coastal Gangetic West Bengal and heavy rainfall at isolated places Sub-Himalayan West Bengal on 14th July and heavy rainfall at isolated places over West Bengal & Sikkim on 15th July.

Jharkhand: Light to moderate rainfall at most places with heavy to very heavy rainfall at isolated places during 14th – 16th July and extremely heavy rainfall at isolated places on 14th July.

Bihar: Light to moderate rainfall at most places with heavy rainfall at isolated places on 14th July, and heavy to very heavy rainfall at isolated places on 15th & 16th July.

Chhattisgarh: Light to moderate rainfall at most places with heavy to very heavy rainfall at isolated places on 14th July; heavy to extremely heavy at isolated places on 15th; heavy to very heavy rainfall at isolated places on 16th July and heavy rainfall at isolated places on 17th July.

East Madhya Pradesh: Light to moderate rainfall at most places with heavy rainfall at isolated places on 14th & 15th July and heavy to very heavy rainfall at isolated places during 16th -17th July.

West Madhya Pradesh: Light to moderate rainfall at most places with heavy to very heavy rainfall at isolated places on 14th July and heavy rainfall at isolated places during 15th -18th July.

East Rajasthan: Light to moderate rainfall at most places with heavy to very heavy rainfall at a few places with extremely heavy rainfall (≥ 21 cm) at isolated places on 14th & 15th July; heavy rainfall at isolated places on 16th & 17th July.

West Rajasthan: Light to moderate rainfall at most places with heavy to very heavy rainfall at a few places with extremely heavy rainfall (≥ 21 cm) at isolated places on 14th & 15th July; heavy to very heavy rainfall at isolated places on 16th and heavy rainfall at isolated places on 17th July.

Gujarat: Light to moderate rainfall at most places with heavy to very heavy rainfall at isolated places over Gujarat region on 14th and heavy rainfall at isolated places on 15th July. Heavy rainfall at isolated places over Saurashtra & Kutch on 14th July.

East Uttar Pradesh: Light to moderate rainfall at most places with heavy rainfall at isolated places during 14th – 18th July and heavy to very heavy rainfall at isolated places on 17th July.

West Uttar Pradesh: Light to moderate rainfall at most places with heavy rainfall at isolated places during 16th – 18th July.

(ii) Wind Warning:

- ❖ Squally wind speed reaching 40-50 kmph gusting to 60 kmph is prevailing over north Bay of Bengal, along & off Odisha, West Bengal and Bangladesh coasts for next 24 hours.
- ❖ Squally wind speed reaching 30-40 kmph gusting to 50 kmph is likely over northeast Rajasthan and adjoining northwest Madhya Pradesh for next 24 hours, and over south Rajasthan & neighbourhood for subsequent 24 hours.

(iii) Sea Condition:

Sea condition is very likely to be rough to very rough over north Bay of Bengal and along & off Odisha, West Bengal and Bangladesh coasts during next 24 hours.

(iv) Fishermen Warning:

Fishermen are advised not to venture into north Bay of Bengal, along & off Odisha, West Bengal and Bangladesh coasts for next 24 hours.

(v) Impact Expected and Action Suggested due to heavy rainfall and squally winds

Impact expected:

- ❖ Breaking of tree branches, uprooting of small trees like banana, papaya, drum sticks. Strong wind and rain may damage plantation, horticulture and standing crops.
- ❖ Partial damage to vulnerable structures due to strong winds and rain.
- ❖ Minor damage to kutcha houses/walls, huts and roads due to heavy rain.
- ❖ Loose objects may fly.
- ❖ Onshore and offshore operations may get affected.
- ❖ Small ships, trawlers and boats may be affected.
- ❖ Road and rail traffic may be affected due to heavy rain and squally winds.
- ❖ There could be localised landslides, mudslides, landslips, water logging, inundation and flooding over low lying areas.
- ❖ Occasional reduction in visibility due to heavy rainfall.
- ❖ Helicopter services may get affected.

Action suggested:

- ❖ People are advised to keep a watch on the weather for worsening conditions and be ready to move to safer places accordingly.
- ❖ Take safe shelters; do not take shelter under trees, as there could be lightning.
- ❖ In case of expected lightning, unplug electrical/ electronic appliances, immediately, get out of water bodies and keep away from all the objects that conduct electricity.
- ❖ Tourism and recreational activities to be regulated.
- ❖ Onshore and offshore activities to be judiciously regulated.
- ❖ Helicopter services to be regulated.

Next bulletin will be issued at 2030 hours IST of today, the 14th July, 2025.

(D.R Pattanaik)
Head RSMC & IMD, New Delhi

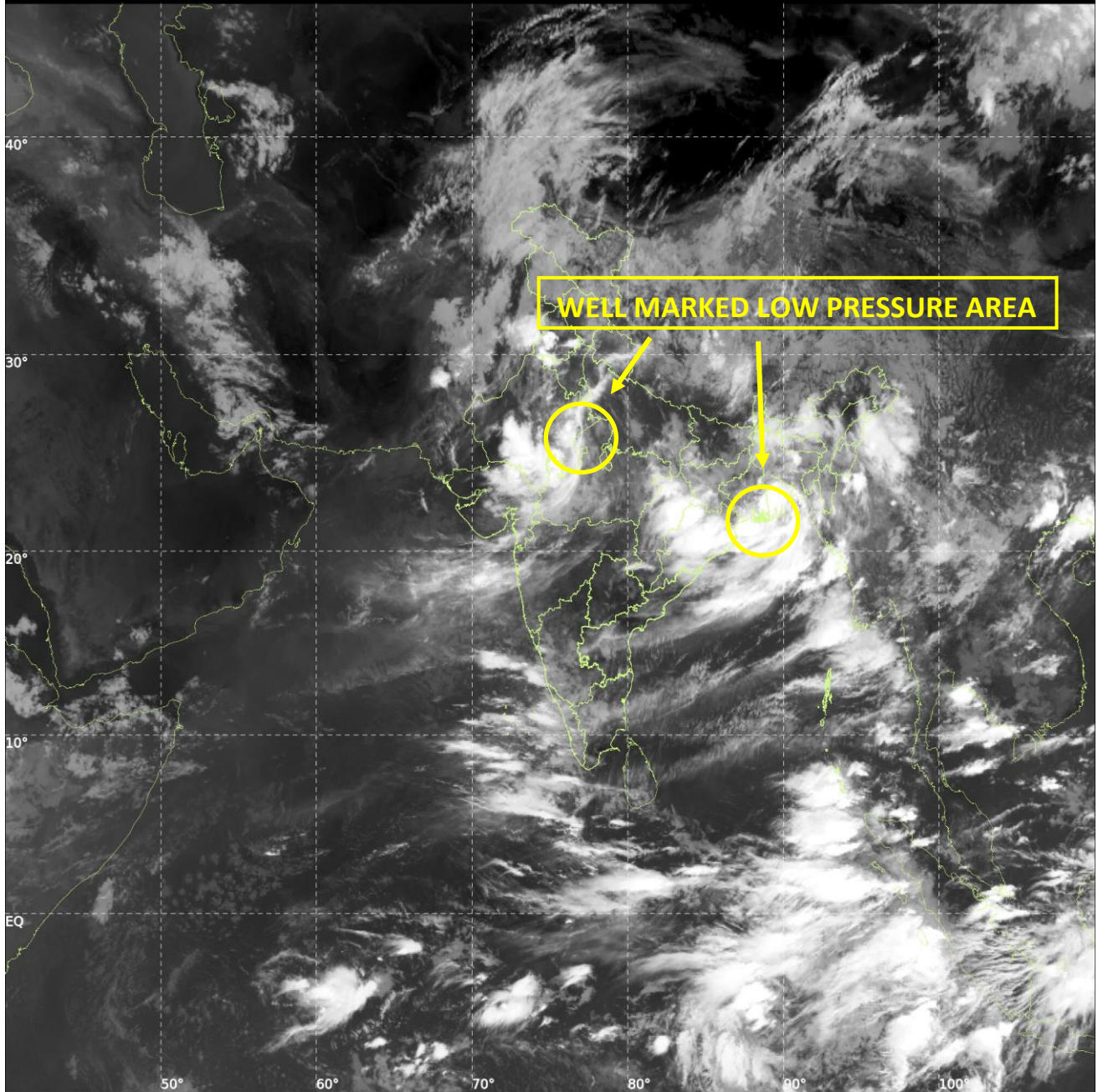
Copy to: ACWC Kolkata/ACWC Chennai/CWC Bhubaneswar/CWC Vishakhapatnam/Meteorological Centres- Port Blair/ Itanagar/ Kohima/ Agartala/ Gangtok/ Imphal/ Aizwal/ Shillong/ Gangtok/ Regional Meteorological Centre Guwahati

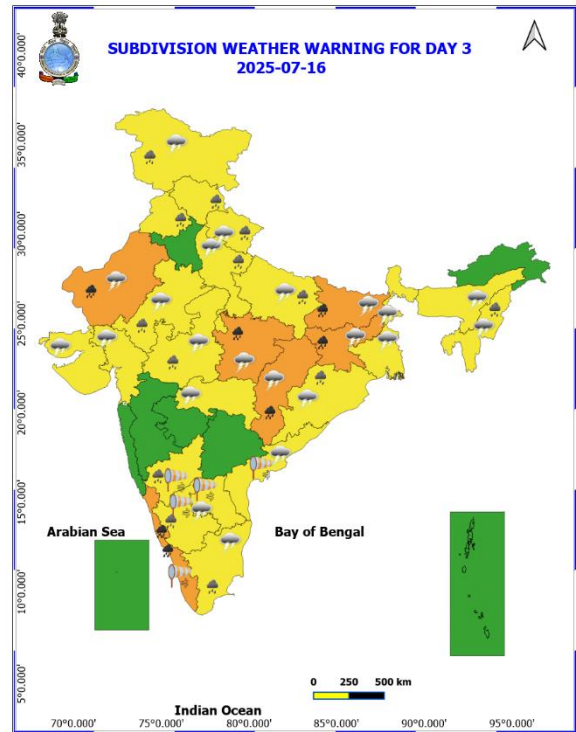
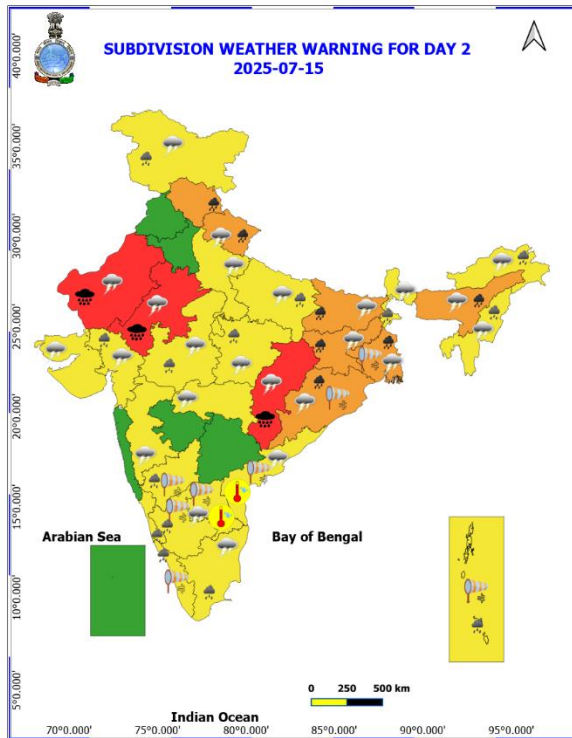
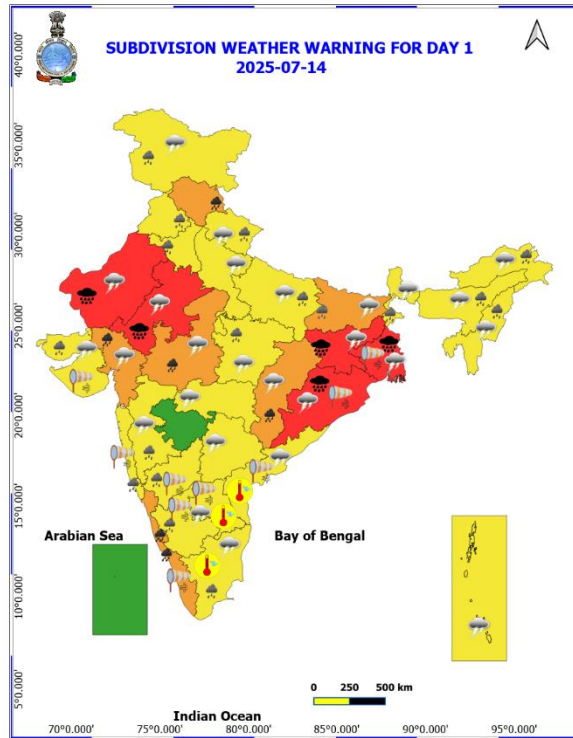


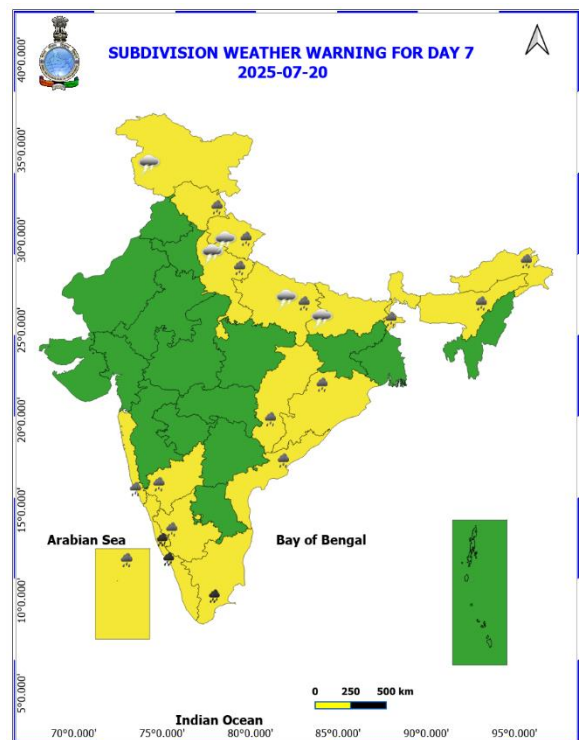
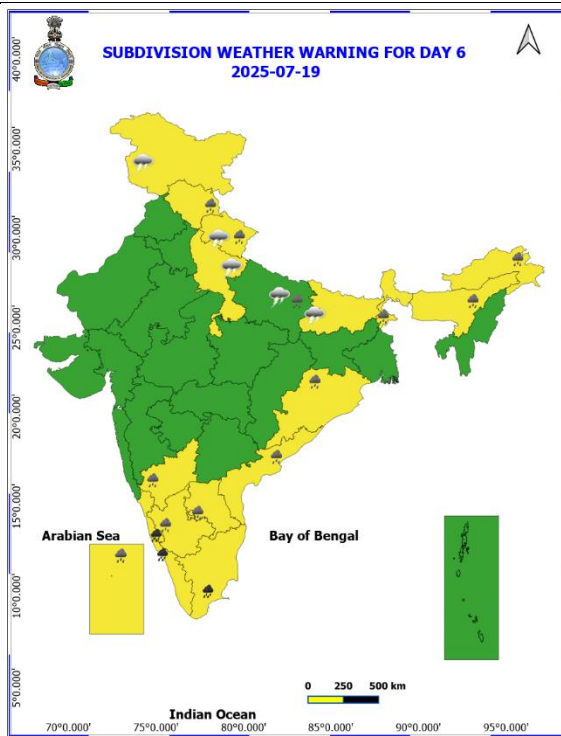
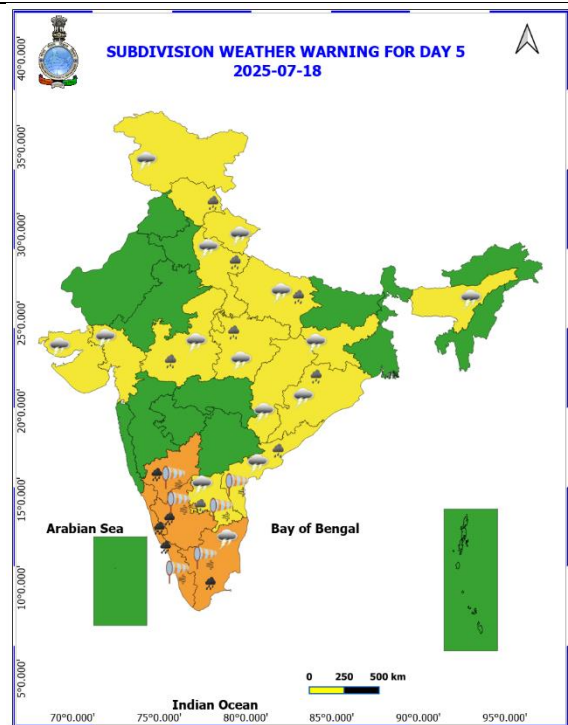
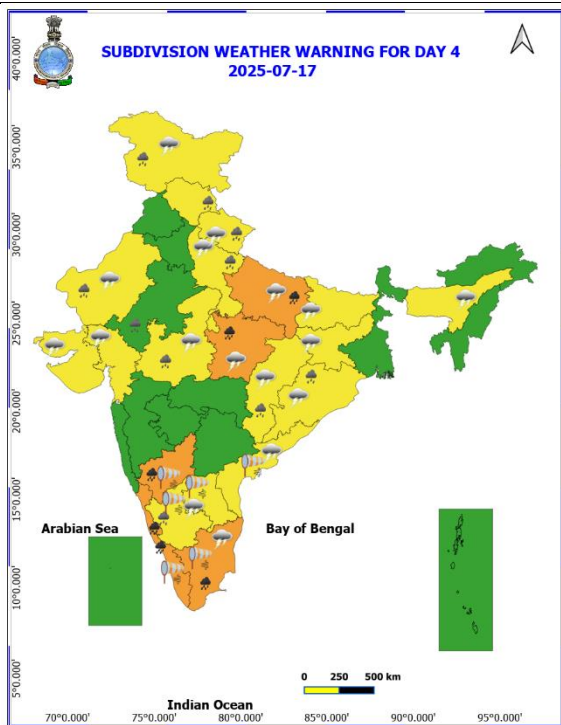
INSAT-3DS IMG, Thermal Infrared1 Count @ 10.83 μm
GMT:14-07-2025/(0300-0327) IST:14-07-2025/(0830-0857)
L1C MERCATOR (LINEAR STRETCH: 1%)

418

913

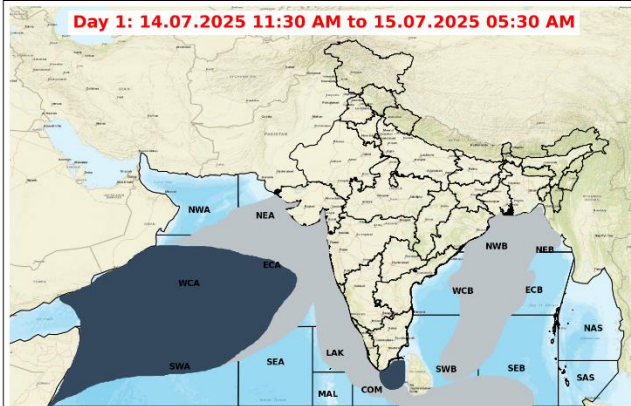




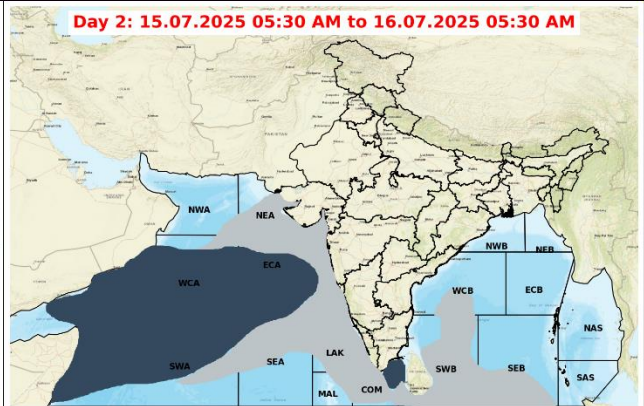


Fishermen Warning Graphics

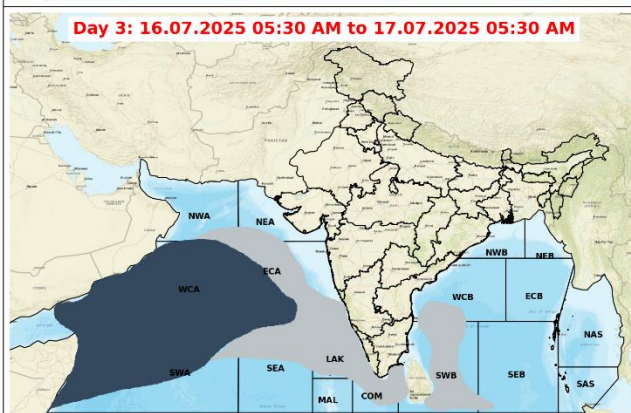
Day 1: 14.07.2025 11:30 AM to 15.07.2025 05:30 AM



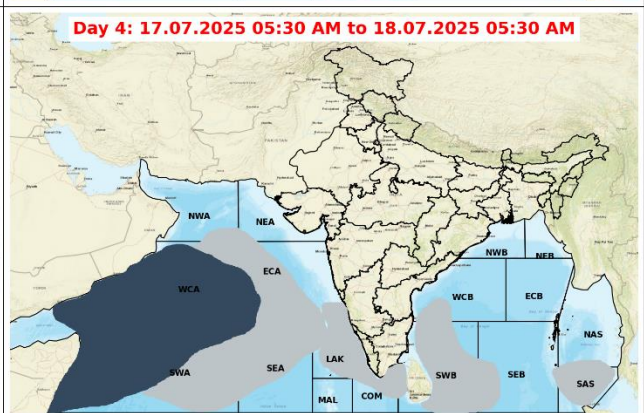
Day 2: 15.07.2025 05:30 AM to 16.07.2025 05:30 AM



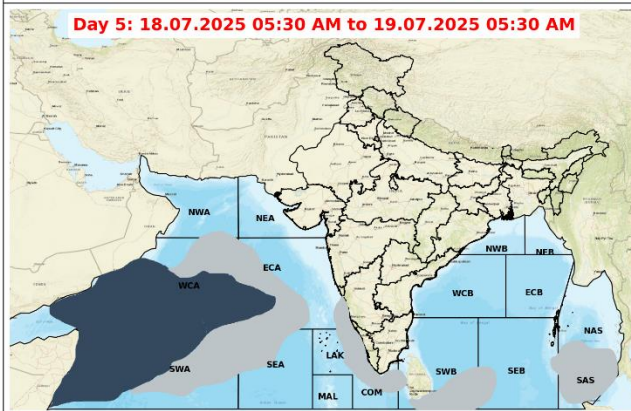
Day 3: 16.07.2025 05:30 AM to 17.07.2025 05:30 AM



Day 4: 17.07.2025 05:30 AM to 18.07.2025 05:30 AM



Day 5: 18.07.2025 05:30 AM to 19.07.2025 05:30 AM



Legend

	Squally wind with speed 55-65 kmph gusting to 75 kmph		CS with Gale winds with speed 60-80 kmph gusting to 90 kmph
	Squally Weather with wind speed 40-50 kmph gusting to 60 kmph		SCS with Gale wind speed 90-110 kmph gusting to 120 kmph
	Squally Weather with wind speed 45-55 kmph gusting to 65 kmph		VSCS with Gale wind speed 120-165 kmph gusting to 185 kmph
	Squally wind with speed 45-55 kmph gusting to 65 kmph		ESCS with Gale wind speed 165-220 kmph gusting to 245 kmph
	Squally wind with speed 50-60 kmph gusting to 70 kmph		

Fishermen are advised not to venture into the marked areas.